

# USER GUIDE

**GolfBox Recover**

# Guide to installation of GolfBox Recover

---

This guide describes how to download, install, and configure the GolfBox Recover software.

## Do I need GolfBox Recover?

Yes if you are using...

- ...GolfBox touchscreen software where players can do tee time booking, tournament signup and more.
- ...GolfBox TV-view of tee times on flatscreen monitor or via projector
- ...GolfBox TV-View of tournament livescoring on flatscreen or via projector

## What does GolfBox Recover do?

The above mentioned software all has a built-in refresh functionality that periodically contacts GolfBox servers to obtain and display changed information.

If the local network, for a second or two, loses its connection to the internet, just as GolfBox data is requested, the result will be a blank page with the error message "Page cannot be displayed" - the refresh functionality is lost and you have to restart the computer again.

With GolfBox Recover installed the program will be aware that the local internet connection has been lost and will periodically (every 30 seconds) contact GolfBox servers. As soon as the local internet connection is re-established the system will continue without having to manually intervene.

## Removing earlier versions

If you at an earlier point already have installed any earlier version of the GolfBox Recover program, you should go to CONTROL PANEL and uninstall it.

Search for GolfBox Touch Recover, Touch Recover or GolfBox Recover and be sure to remove all those installations.

You should also remove any shortcuts to programs starting up automatically when the computer is turned on. Go to Windows Explorer and find "This Computer > C drive > Documents and Settings > All users > Start Menu > Start". Delete all unnecessary shortcuts e.g. Internet Explorer and any shortcuts named GolfBox...

## Download

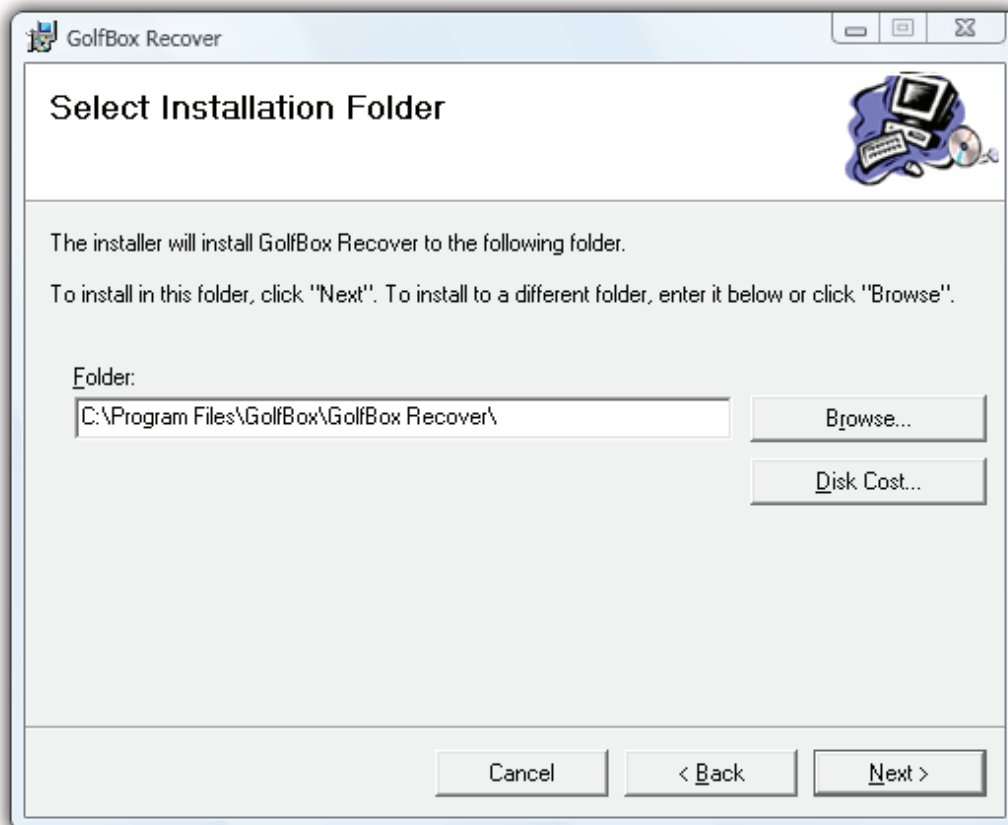
Go to the address <http://www.golfbox.dk/download/recoversetup.asp> and choose to view this guide or to download the GolfBox Recover program. When downloading the program you should choose to save the file to the Desktop. When the file is downloaded it has to be installed.

**GolfBox A/S**  
Sensommervej 34 F  
8600 Silkeborg  
Denmark

Tel.: +45 2173 4000  
Mail: [info@GolfBox.dk](mailto:info@GolfBox.dk)  
Web: [www.GolfBox.net](http://www.GolfBox.net)

## Installation

Run the downloaded file. If the “.Net Framework 2.0” is not already installed on the PC, the installation will start by downloading and installing this framework. At some point you must accept the conditions for using this framework.



After the framework is installed, the actual installation of the GolfBox Recover can begin. The installation is done using a guide, where you must press “Next” a couple of times. At some point you must confirm the installation folder as seen in the picture above. Just press the button “Next”. The installation continues and is finished when you press the button “Close” on the last page.

On the Desktop the file “recoversetup.exe” is located. This can now be deleted.

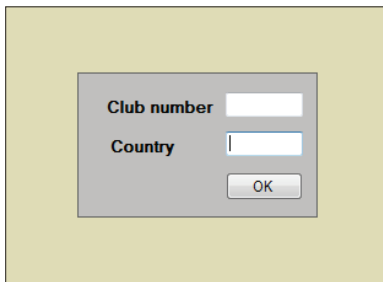
At this point you must restart the PC.

**GolfBox A/S**  
Sensommervej 34 F  
8600 Silkeborg  
Denmark

Tel.: +45 2173 4000  
Mail: [info@GolfBox.dk](mailto:info@GolfBox.dk)  
Web: [www.GolfBox.net](http://www.GolfBox.net)

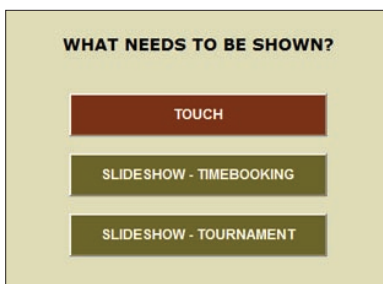
## Configuration

When the PC starts you will be asked to put in your club number and country. Input this information and press OK. You only have to do this one time. From now on the program will automatically use this information.



A screenshot of a configuration dialog box with a light green background. It contains two input fields: "Club number" and "Country", each with a small white text box. Below the "Country" field is an "OK" button.

Find your 2 character country code in appendix A



A screenshot of a dialog box titled "WHAT NEEDS TO BE SHOWN?". It features three buttons: "TOUCH" (highlighted in red), "SLIDESHOW - TIMEBOOKING", and "SLIDESHOW - TOURNAMENT".

First time the system will wait for your choice.

Whenever you launch GolfBox recover after this, the last choice you made will be remembered and this option is automatically chosen after at timeout of 15 seconds, unless you within the 15 seconds choose another option.

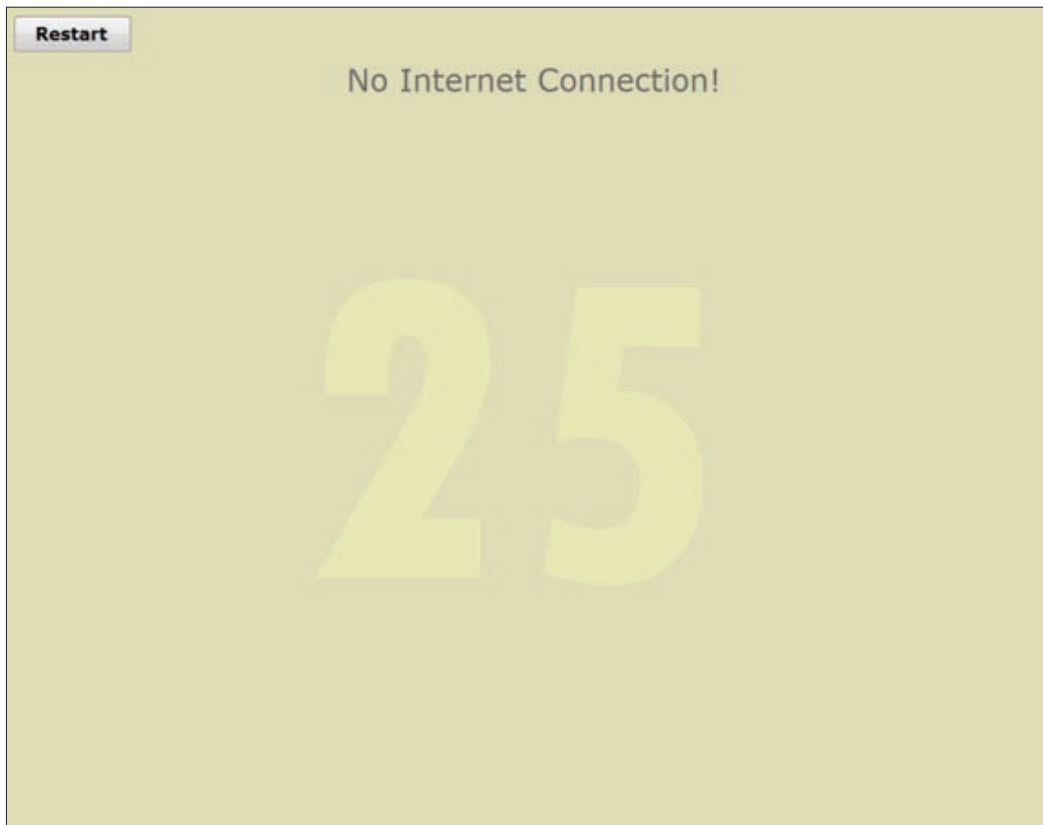
The touch option will go directly to the display, but for the other two options you will have to choose among the slideshows you have created within GolfBox.

**GolfBox A/S**  
Sensommervej 34 F  
8600 Silkeborg  
Denmark

Tel.: +45 2173 4000  
Mail: [info@GolfBox.dk](mailto:info@GolfBox.dk)  
Web: [www.GolfBox.net](http://www.GolfBox.net)

### If local Internet connection is lost

If your local Internet connection is lost, and GolfBox software tries to update the information on the screen, it cannot receive this from GolfBox servers this screen comes up:



A timer in the middle of the screen will count from 30 seconds and down to zero, and after that try to get data from GolfBox servers. If the local connection is still down the timer starts over again and will continue to do so, until local Internet connection is re-established.

On a touch screen you also have the option to press the "Restart" button to try to get data from GolfBox servers.

**GolfBox A/S**  
Sensommervej 34 F  
8600 Silkeborg  
Denmark

Tel.: +45 2173 4000  
Mail: [info@GolfBox.dk](mailto:info@GolfBox.dk)  
Web: [www.GolfBox.net](http://www.GolfBox.net)

## Apendix A

<u>Country name</u>	<u>Country code</u>	<u>Country name</u>	<u>Country code</u>
Afghanistan	AF	Comoros	KM
Albania	AL	Congo (brazzaville)	CG
Algeria	DZ	Congo (kinshasa)	CD
American Samoa	AS	Cook Islands	CK
Andorra	AD	Costa Rica	CR
Angola	AO	Côte D'ivoire	CI
Anguilla	AI	Croatia (local Name: Hrvatska)	HR
Antarctica	AQ	Cuba	CU
Antigua And Barbuda	AG	Cyprus	CY
Argentina	AR	Czech Republic	CZ
Armenia	AM	Denmark	DK
Aruba	AW	Djibouti	DJ
Australia	AU	Dominica	DM
Austria	AT	Dominican Republic	DO
Azerbaijan	AZ	Ecuador	EC
Bahamas	BS	Egypt	EG
Bahrain	BH	El Salvador	SV
Bangladesh	BD	England	EN
Barbados	BB	Equatorial Guinea	GQ
Belarus	BY	Eritrea	ER
Belgium	BE	Estonia	EE
Belize	BZ	Ethiopia	ET
Benin	BJ	Falkland Islands	FK
Bermuda	BM	Faroe Islands	FO
Bhutan	BT	Fiji	FJ
Bolivia	BO	Finland	FI
Bosnia And Herzegowina	BA	France	FR
Botswana	BW	French Guiana	GF
Bouvet Island	BV	French Polynesia	PF
Brazil	BR	French Southern Lands	TF
British Indian Ocean Territory	IO	Gabon	GA
Brunei Darussalam	BN	Gambia	GM
Bulgaria	BG	Georgia	GE
Burkina Faso	BF	Germany	DE
Burundi	BI	Ghana	GH
Cambodia	KH	Gibraltar	GI
Cameroon	CM	Greece	GR
Canada	CA	Greenland	GL
Cape Verde	CV	Grenada	GD
Cayman Islands	KY	Guadeloupe	GP
Central African Republic	CF	Guam	GU
Chad	TD		
Chile	CL		
China	CN		
Christmas Island	CX		
Cocos (keeling) Islands	CC		
Colombia	CO		

**GolfBox A/S**  
 Sensommervej 34 F  
 8600 Silkeborg  
 Denmark

Tel.: +45 2173 4000  
 Mail: [info@GolfBox.dk](mailto:info@GolfBox.dk)  
 Web: [www.GolfBox.net](http://www.GolfBox.net)

## Appendix A

<u>Country name</u>	<u>Country code</u>	<u>Country name</u>	<u>Country code</u>
Guatemala	GT	Moldova	MD
Guinea	GN	Monaco	MC
Guinea-Bissau	GW	Mongolia	MN
Guyana	GY	Montserrat	MS
Haiti	HT	Morocco	MA
Heard And Mcdonald Islands	HM	Mozambique	MZ
Honduras	HN	Myanmar	MM
Hong Kong	HK	Namibia	NA
Hungary	HU	Nauru	NR
Iceland	IS	Nepal	NP
India	IN	Netherlands	NL
Indonesia	ID	Netherlands Antilles	AN
Iran	IR	New Caledonia	NC
Iraq	IQ	New Zealand	NZ
Ireland	IE	Nicaragua	NI
Israel	IL	Niger	NE
Italy	IT	Nigeria	NG
Jamaica	JM	Niue	NU
Japan	JP	Norfolk Island	NF
Jordan	JO	Northern Ireland	NT
Kazakhstan	KZ	Northern Mariana Islands	MP
Kenya	KE	Norway	NO
Kiribati	KI	Oman	OM
Korea, North	KP	Pakistan	PK
Kuwait	KW	Palau	PW
Kyrgyzstan	KG	Palestine	PS
Laos	LA	Panama	PA
Latvia	LV	Papua New Guinea	PG
Lebanon	LB	Paraguay	PY
Lesotho	LS	Peru	PE
Liberia	LR	Philippines	PH
Libya	LY	Pitcairn	PN
Liechtenstein	LI	Poland	PL
Lithuania	LT	Portugal	PT
Luxembourg	LU	Puerto Rico	PR
Macau	MO	Qatar	QA
Macedonia, The Former Yugoslav Republic of	MK	Reunion	RE
Madagascar	MG	Romania	RO
Malawi	MW	Russian Federation	RU
Malaysia	MY	Rwanda	RW
Maldives	MV	Saint Helena	SH
Mali	ML	Saint Kitts And Nevis	KN
Malta	MT		
Marshall Islands	MH		
Martinique	MQ		
Mauritania	MR		
Mauritius	MU		
Mayotte	YT		
Mexico	MX		
Micronesia	FM		

**GolfBox A/S**  
 Sensommervej 34 F  
 8600 Silkeborg  
 Denmark

Tel.: +45 2173 4000  
 Mail: [info@GolfBox.dk](mailto:info@GolfBox.dk)  
 Web: [www.GolfBox.net](http://www.GolfBox.net)

## Apendix A

<u>Country name</u>	<u>Country code</u>
Saint Lucia	LC
Saint Pierre And Miquelon	PM
Saint Vincent And The Grenadines	VC
Samoa	WS
San Marino	SM
Sao Tome And Principe	ST
Saudi Arabia	SA
Scotland	SL
Senegal	SN
Serbia And Montenegro	CS
Seychelles	SC
Singapore	SG
Slovakia (slovak Republic)	SK
Slovenia	SI
Solomon Islands	SB
Somalia	SO
South Africa	ZA
South Georgia And South Sandwich Islands	GS
South Korea	KR
Spain	ES
Sri Lanka	LK
Sudan	SD
Suriname	SR
Svalbard And Jan Mayen Islands	SJ
Swaziland	SZ
Sweden	SE
Switzerland	CH
Syria	SY
Taiwan	TW
Tajikistan	TJ
Tanzania	TZ
Thailand	TH
Timor-Leste	TL
Togo	TG
Tokelau	TK
Tonga	TO
Trinidad And Tobago	TT
Tunesia	TN
Turkey	TR
Turkmenistan	TM
Turks And Caicos Islands	TC
Tuvalu	TV
Uganda	UG
Ukraine	UA
United Arab Emirates	AE
United Kingdom	GB

<u>Country name</u>	<u>Country code</u>
United States	US
United States Minor Outlying Islands	UM
Uruguay	UY
Uzbekistan	UZ
Vanuatu	VU
Vatican City State (holy See)	VA
Venezuela	VE
Viet Nam	VN
Virgin Islands, British	VG
Virgin Islands, U.S.	VI
Wales	WL
Wallis And Futuna Islands	WF
Western Sahara	EH
Yemen	YE
Yugoslavia	YU
Zambia	ZM
Zimbabwe	ZW
Åland	AX

**GolfBox A/S**  
 Sensommervej 34 F  
 8600 Silkeborg  
 Denmark

Tel.: +45 2173 4000  
 Mail: [info@GolfBox.dk](mailto:info@GolfBox.dk)  
 Web: [www.GolfBox.net](http://www.GolfBox.net)